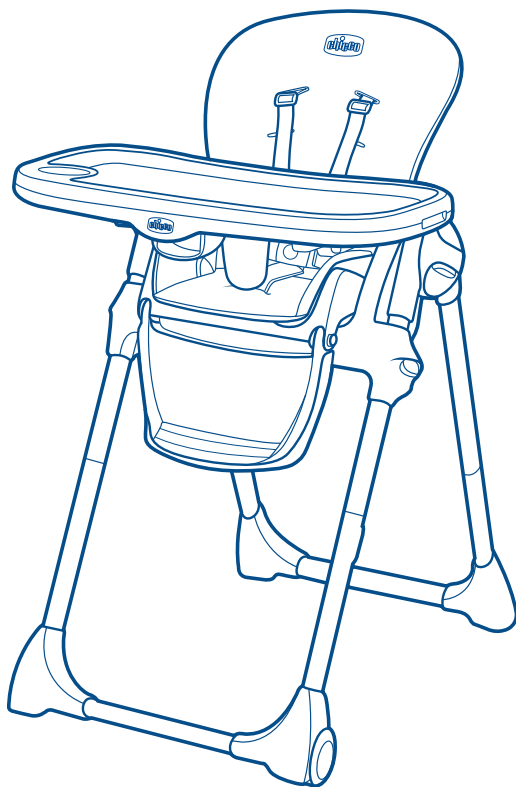




Read all instructions BEFORE
assembly and USE of product.
KEEP INSTRUCTIONS FOR
FUTURE USE.



Polly[®] **Highchair**

Owner's Manual

! WARNING

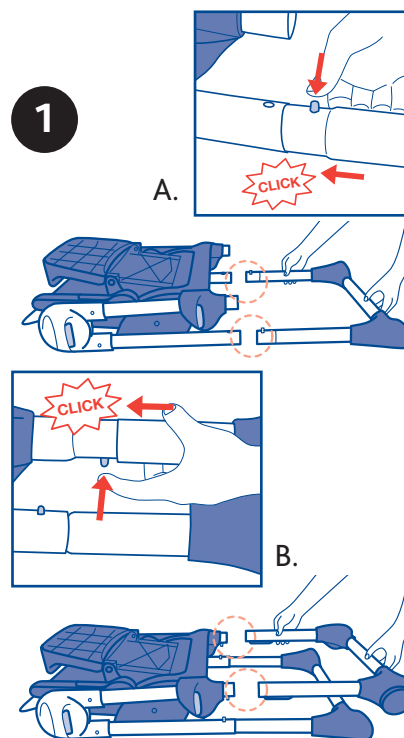
Failure to follow these warnings and the assembly instructions could result in serious injury or death.

- PLEASE SAVE OWNER'S MANUAL FOR FUTURE USE.
- ADULT ASSEMBLY REQUIRED.
- NEVER LEAVE CHILD UNATTENDED. Always keep child in view while in the highchair.
- FALL HAZARD: Children have suffered severe head injuries including skull fractures when falling from high chairs. Falls can happen suddenly if child is not restrained properly.
- Always use restraints, and adjust to fit snugly.
- Stay near and watch child during use.
- Secure your child at all times with the restraint system provided, in either the reclining or upright position.
- The tray is not designed to hold your child in the chair.
- It is recommended that the highchair be used in the upright position only by children capable of sitting upright unassisted.
- Always lock the wheels when the child is sitting in the highchair, or when the highchair is open but not in use. Always place the highchair on a horizontal, stable surface. Never place the highchair near stairs or steps. Do not move chair with child in it.
- Do not use this highchair for more than one child at a time and do not leave other children playing unattended near the highchair.
- Do not use the highchair if any part is broken, torn, or missing.
- Ensure that all components are correctly fitted and adjusted before use.
- Do not place any heavy bags, packages, or other items on the highchair tray. They may cause the chair to tip over.
- To avoid the danger of suffocation, remove all plastic covers before using the highchair. Immediately destroy the plastic cover to keep it away from babies and children.
- Do not leave the highchair near walls, curtains, or windows, where the child can become tangled, or where a child may be able to use its feet to push against the highchair.
- To avoid the risk of fire, never leave the highchair near sources of strong heat such as open fires, electric heaters, and gas stoves. If the chair is exposed to direct sunlight, wait for it to cool down before placing your child in it.
- This highchair is recommended for children up to 36 months old, or for children who weigh less than 40 lbs (18kg).
- Do not use accessories, spare parts, and components other than those supplied by Chicco.

How to Assemble/Open the Highchair

! WARNING

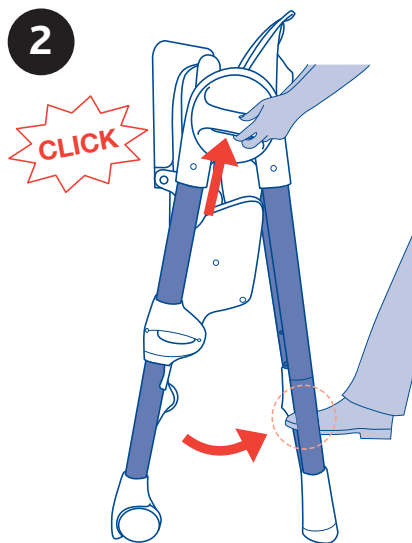
When opening the highchair, ensure that your child, or other children, are at a safe distance. Ensure that during these operations, the movable parts of the highchair do not come into contact with your child.



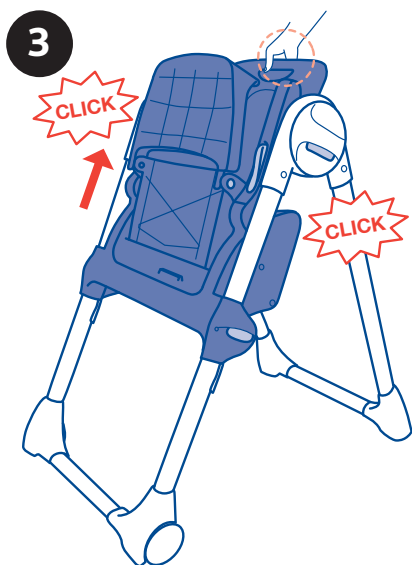
The ends of the front and rear legs have a different shape to avoid errors in the assembly phase.

1. Fix the legs to the highchair frame as shown. Rear legs: Keep the two locking buttons located at the base of the frame pressed down and insert the legs. The parts are correctly locked only when the two locking buttons come out from the holes on the legs, and an audible click is heard, signalling that the legs are securely fitted (diagram 1A). Front legs: keep the two locking buttons, located at the base of the frame, pressed down and insert the legs into the structure. The parts are locked only when the two locking buttons come out from the holes on the legs, and an audible click is heard, signalling that the legs are securely fitted (diagram 1B).

How to Assemble/Open the Highchair

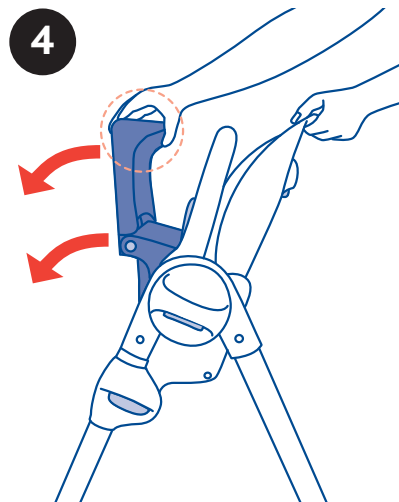


2. Stand at the back of the highchair and hold the two side joints, then press the open/close buttons. At the same time, open the Highchair legs using your foot, until an audible click is heard, signalling that the legs are locked in the open position (diagram 2).

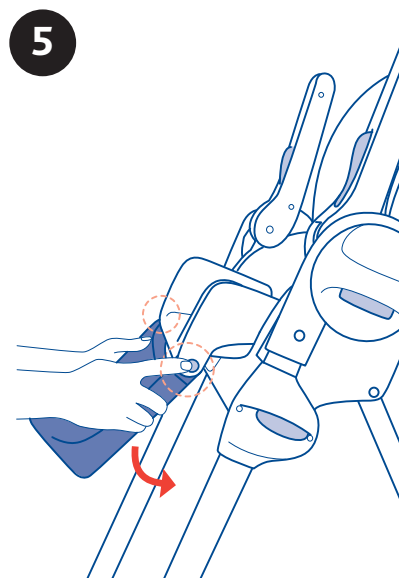


3. Raise the seat by holding the upper part of the backrest and pull it upward, until the desired height is reached (diagram 3). The Highchair can be adjusted to 7 height positions.

How to Assemble/Open the Highchair

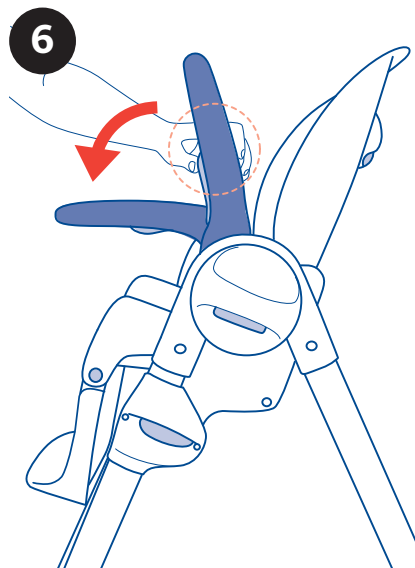


4. Lower the seat and leg rest with your hands (diagram 4). The seat is fixed to the frame by a fastening device.



5. Press the side adjustment buttons and lower the leg rest in a vertical position (diagram 5).

How to Assemble/Open the Highchair

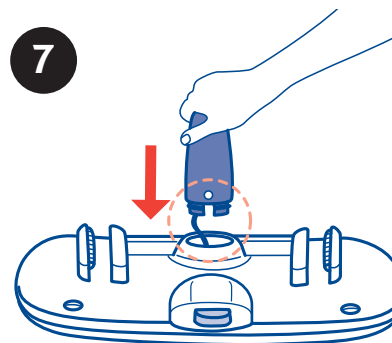


6. Lower the armrests by pressing the two buttons located at the bottom of the armrests (diagram 6).

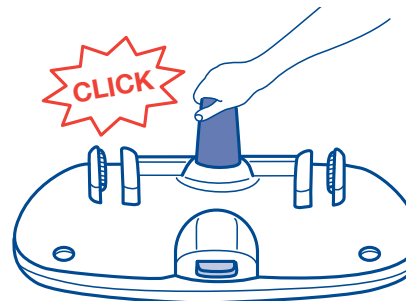
How to Assemble/Open the Highchair

⚠ WARNING

IMPORTANT FOR YOUR CHILD'S SAFETY - Always fit the crotch bar to the tray before fitting the tray to the Highchair. Once the crotch bar has been fitted, it must never be removed.

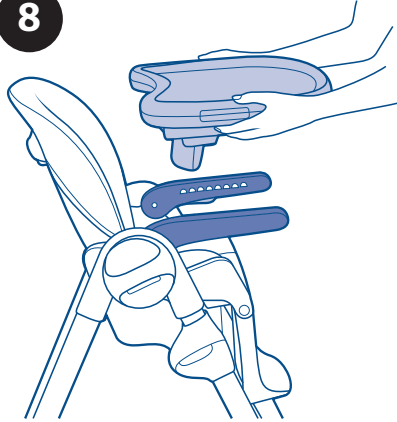


7. Insert the Crotch Bar into the corresponding opening on the tray. Make sure the tether does not hinder the Crotch Bar from snapping into place. The design of the Crotch Bar allows it to only be assembled one way.

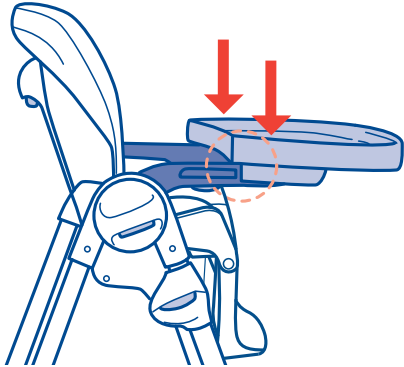


Fitting/Adjusting the Tray

8



8. The tray can now be fitted to the Highchair. Line up the tray guides with armrests and push down on tray.

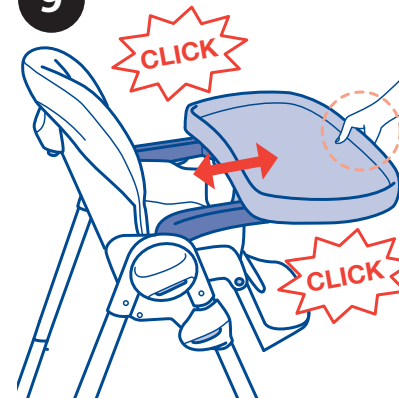


Fitting/Adjusting the Tray

⚠ WARNING

Always ensure that the tray is locked correctly to the armrests before use.

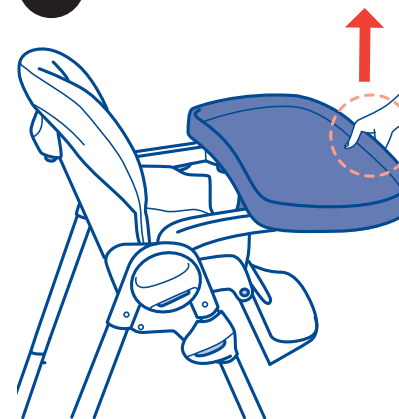
9



The tray can be adjusted to 4 positions.

9. Move the tray until the desired position is reached and release the button. If the tray is not automatically locked on the armrests, move the tray until a click is heard, signalling that the tray is locked (diagram 9). Pull up on both sides of the tray to make sure it is locked.

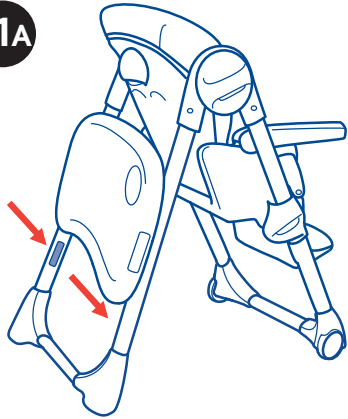
10



10. To remove the tray, you must squeeze the release button under the tray, then pull up or off.

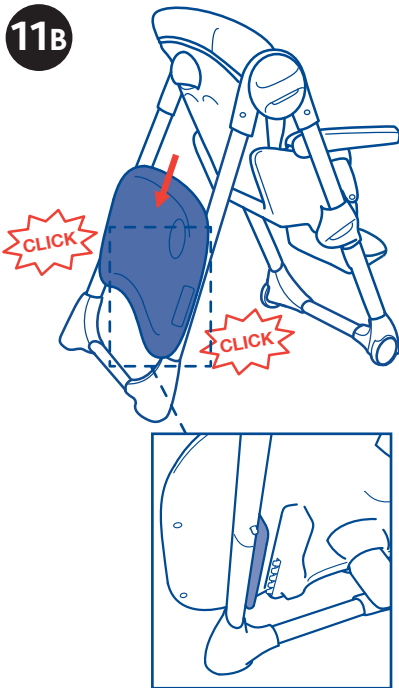
Storing the Tray

11A



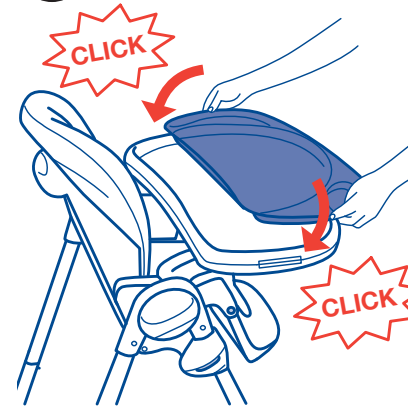
11. When not in use, the tray can be stored on the rear legs of the frame by using the rear leg slots as shown in 11A. With the tray resting against the rear legs, above the slots and locking guides on the inside of the rear legs, allow the tray to slide down the legs and lock into rear leg slots (diagram 11B). To release the tray press the locking button and remove from the legs.

11B



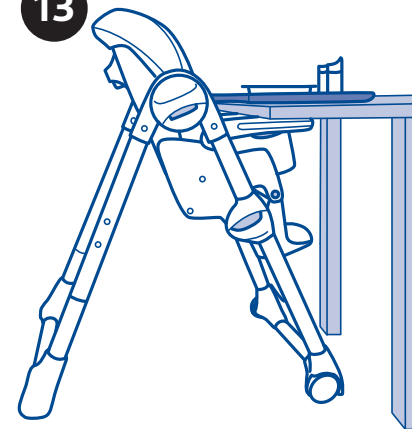
Using the Tray Cover

12



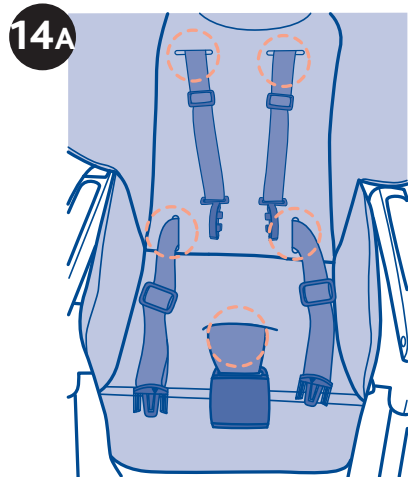
12. The Highchair has a tray cover. This can be attached by firmly pushing down on the outside area of the tray until it clicks into place, as shown. To remove the tray pull out on the outside edge of the tray and lift up.

13

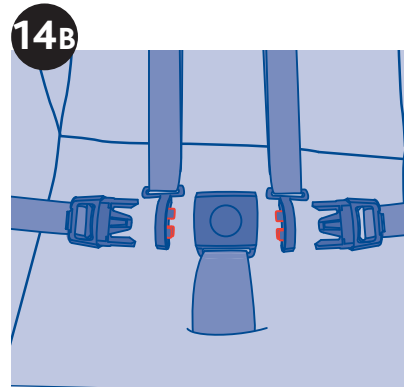


13. The tray cover can be used as a convenient serving tray if the child eats sitting directly at the table with his/her parents (diagram 13).

How to use the safety harness

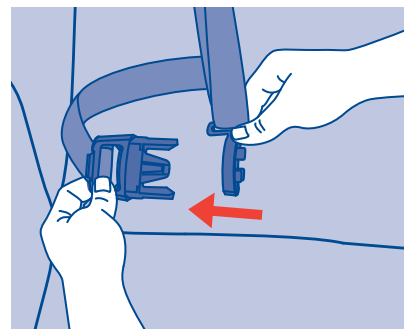


14A. Fit the Highchair cover to the Highchair seat. Thread the shoulder straps, waist belt and crotch strap through the corresponding openings (diagram 14A). Make sure the shoulder straps are at the appropriate height position and the waist belt is pulled through the seat fabric. Repeat steps 14A, 14B, 14C and 14D with second cover (included only on certain models).

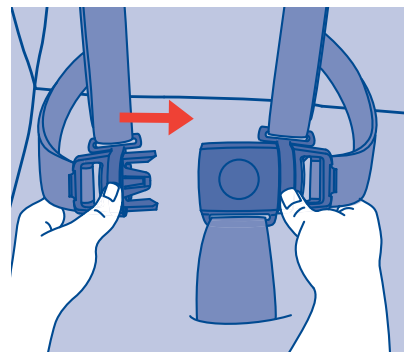


14B. The Highchair has a 5-point safety harness. The Shoulder Strap Connector is designed to break away from the Waist Clip when not secured in the Crotch Strap Buckle.

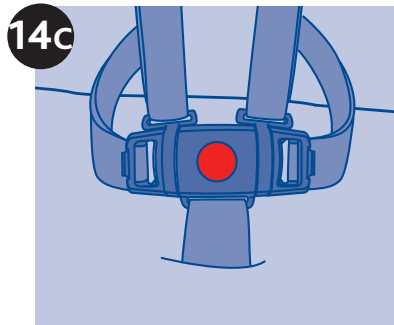
Make sure the Shoulder Strap Connector is in the correct position, as shown. Slide the Shoulder Strap Connector onto the Waist Strap Clip and repeat for the other side.



Then slide both Waist Clips into the Crotch Strap Buckle as shown. Pull on both sides to make sure the Clips are secured to the Buckle.

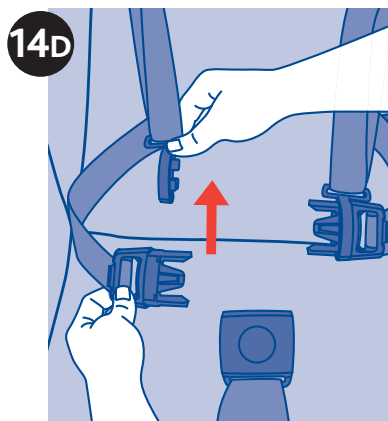


How to use the safety harness



14C. The safety harness can be released by pressing the button on the center of the Crotch Strap Buckle and pulling both Waist Clips out.

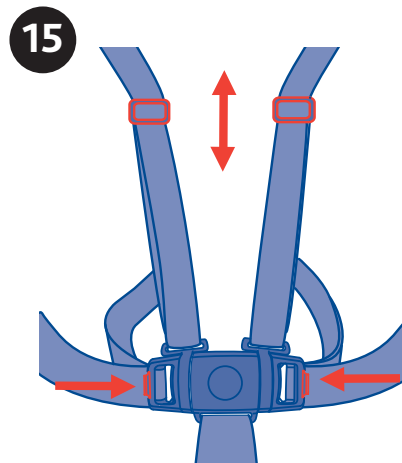
14D. Pull on the Shoulder Strap Connector to remove it from the Waist Strap Clip.



How to use the safety harness

⚠ WARNING

Prevent serious injury or death from sliding out, falls, or tipping over. Always secure child in the restraint. Never leave child unattended. The tray is not designed to hold the child in the chair.



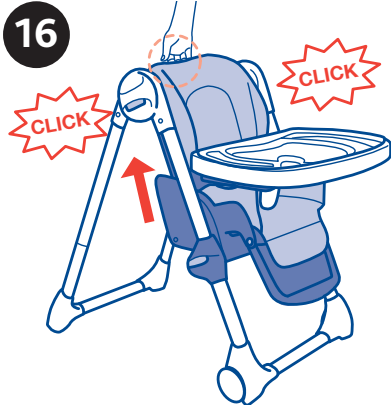
15. The length of the Shoulder Straps can be adjusted by pulling on the adjustment buckles to tighten or loosen.

The length of the Waist Straps can be adjusted by pressing the tab at the end of the Waist Strap Clip and pulling on the strap to tighten or loosen to better fit your child.

Adjusting the Height of the Highchair

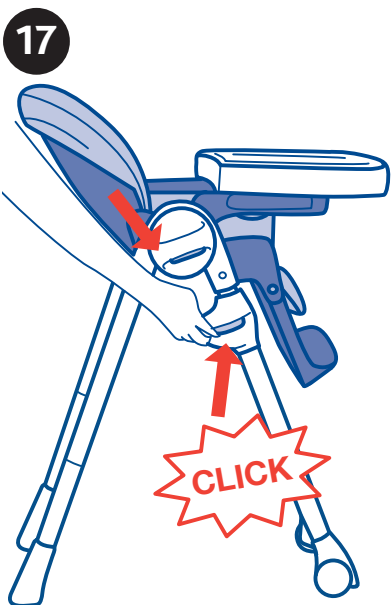
⚠ WARNING

Do not adjust the height with child in product.



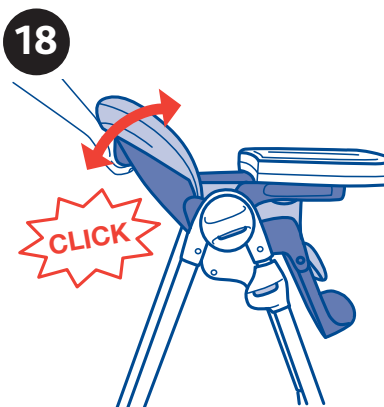
The Highchair can be adjusted to 7 height positions.

16. To raise the seat: Hold the upper part of the backrest and pull it upward, until the desired height is reached (diagram 16).



17. To lower the seat: Press the two side buttons simultaneously and lower the seat, until the desired height is reached (diagram 17).

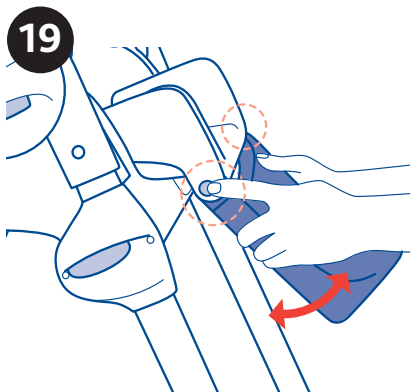
Reclining Backrest Adjustment



The backrest of the Highchair can be adjusted to 3 positions.

18. To adjust the backrest, press the button located at the rear top, recline the backrest until the desired position is reached and release the button, the backrest will lock automatically and an audible click is heard, signalling that it is locked into position (diagram 18).

Leg Rest



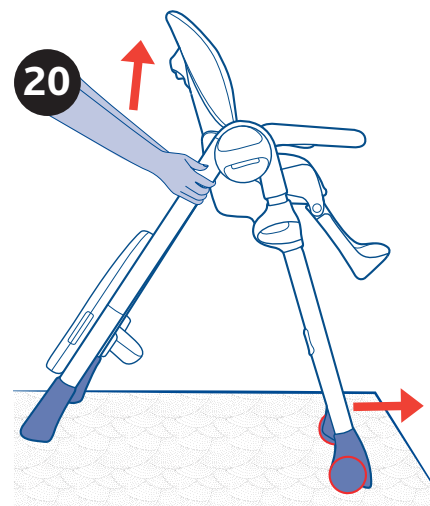
The leg rest of the Highchair can be adjusted to 3 positions.

19. Press the two side adjustment buttons and recline the leg rest, until the desired position is reached (diagram 19).

Wheels

⚠ WARNING

Always place the Highchair on a horizontal, stable surface. Never place the Highchair near stairs or steps. Do not move chair with child in it.



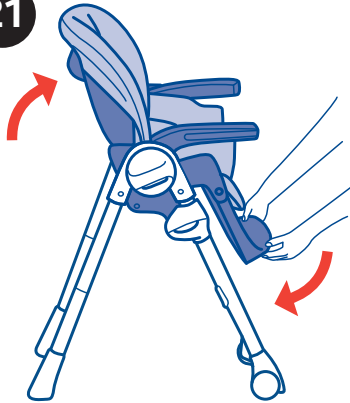
20. To move the Highchair, lift the back legs up and push the highchair to the desired location.

Closing the Highchair

⚠ WARNING

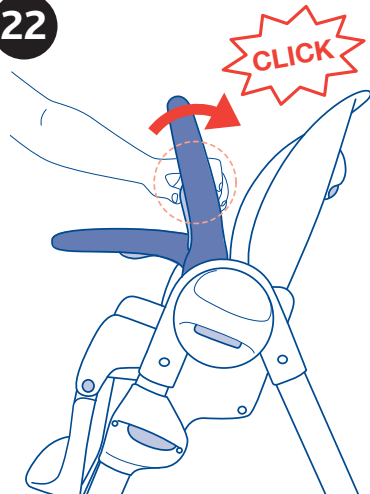
When opening the highchair, ensure that your child, or other children, are at a safe distance. Ensure that during these operations the movable parts of the highchair do not come into contact with your child. If it is fitted, remove the tray before starting any closing operations.

21



21. Place the backrest in a upright position, and rotate the footrest down.

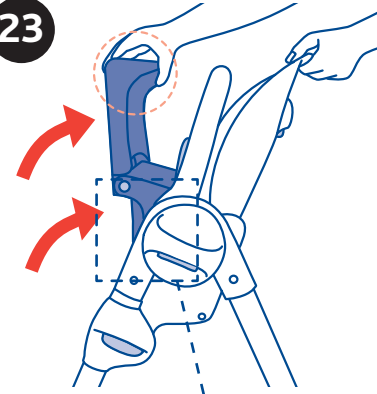
22



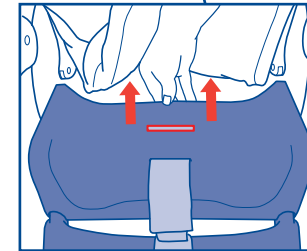
22. Raise the armrest in a vertical direction by pressing the buttons located on the lower part of the armrests, until an audible click is heard (diagram 22).

Closing the Highchair

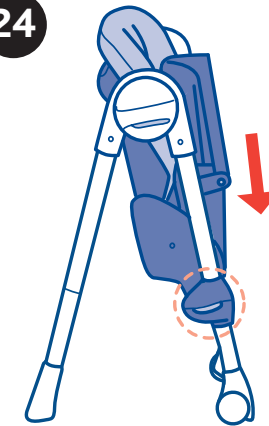
23



23. Lift up on seat pad and locate the back edge of the seat. Unsnap the seat from the frame. Fold up the seat and leg rest as shown.



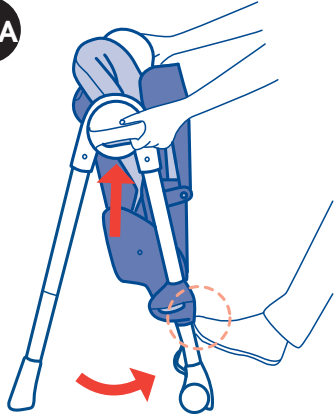
24



24. Lower the seat by pressing the two side buttons at the same time, as shown in the (diagram 24).

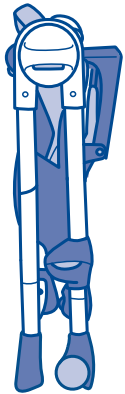
Closing the Highchair

25A



25A. Press the buttons at the center of the side joints and, at the same time, close the legs of the Highchair using your foot.

25B



25B. The Highchair can be closed with the tray stored on the rear legs, if desired.

Care and Maintenance

This product requires regular maintenance. The cleaning and maintenance of the Highchair must only be carried out by an adult.

CLEANING

You can remove the seat pad for cleaning. To do so, unfasten the restraint harness and pull the seat pad upward. You can spot clean the seat pad with a damp cloth and mild detergent. Do not machine wash seat pad. Do not use bleach wipes or spray on the pad or plastics. Do not use bleach.

MAINTENANCE

Lubricate only when necessary using a dry silicone based lubricant. Clean all plastic parts periodically using a soft damp cloth and mild detergent. Do not use bleach. Check the wheels periodically for signs of wear or damage and keep them clean of dust or sand. Prolonged exposure to sunlight will cause the fabric to fade. Serving tray insert can be washed in the dishwasher. Main tray can be wiped clean using a soft damp cloth and mild detergent. Do not use bleach. Important for your child's safety do not remove the crotch bar from the tray.

For More Information

For USA customers :

If you have any questions or comments about this product, or are missing any of the parts. Please do not return this product to the store. Contact us in one of the following ways:



(877)-424-4226



info.usa@artsana.com



www.chiccousa.com



1826 William Penn Way
Lancaster, PA 17601



www.chiccousa.com