

! WARNING

For Your Child's Safety - Read All Instructions

CAUTION

- Adult supervision required.
- Keep unassembled parts out of child's reach.
- Do **NOT** allow child to walk or run while holding the Feeding Bottle.
- Do **NOT** use Feeding Nipples alone as a pacifier.
- Use **ONLY** Chicco NaturalFit Feeding Nipple with this product.

! WARNING

For Your Child's Safety - Read All Instructions

CAUTION

- Continuous and prolonged sucking of milk, formula, and other fluids can cause tooth decay.
- Microwave heating of bottle contents can cause uneven heating and is not recommended.
- Always check the temperature of the bottle contents before feeding.

! WARNING

For Your Child's Safety - Read All Instructions

CAUTION

- Inspect carefully before each use, especially when the child has teeth. Gently pull the Feeding Nipple in all directions to check for any damage. Discard Feeding Nipple at the first sign of damage.
- For hygiene reasons, we recommend replacing nipples after 3 months.
 - Do not place glass or plastic bottles in the freezer.

! WARNING

For Your Child's Safety - Read All Instructions

CAUTION: FOR GLASS BOTTLES ONLY

- Always have an adult holding the glass bottle. Never allow child to hold glass bottle unassisted.
- Glass bottles can break - Discard bottle immediately if bottle breaks or develops cracks.
- Sudden temperature changes can cause glass to crack or break. Make sure glass bottle and liquid are at the same temperature when filling or warming.

Before First Use

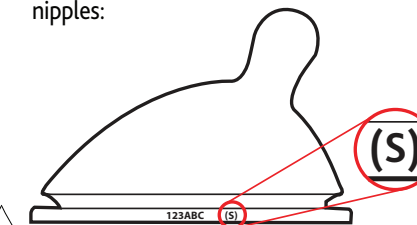
Sterilize in boiling water for 5 minutes - Allow to cool completely and dry thoroughly.

Before Use

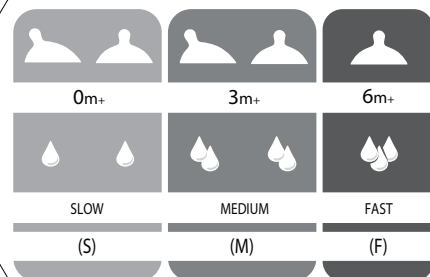
- Make sure the cap ring is screwed tightly on to the Feeding Bottle to avoid leaking.
- Pull up on the Feeding Nipple to make sure it is correctly fitted into the cap ring.

Nipple Flow Rate

Check the flow rate on the side of the nipples:



Nipple Flow Rate



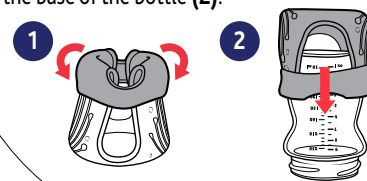
Glass Bottle and Silicone Sleeve

The Silicone Sleeve is not designed to protect the bottle from breaking. The silicone sleeve is designed to provide a more secure grip and shield against minor bumps and scratches. Only use the Silicone Sleeve with the Chicco Glass Bottle.

Always remove the Silicone Sleeve before cleaning.

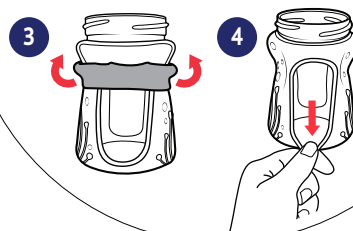
Assembling Silicone Sleeve

Fold the Silicone Sleeve in half (1). Place the bottle upside down on a flat stable surface. Line up the cut outs in the sleeve with the graduated scale on the bottle and pull the sleeve down onto the base of the bottle (2).



Assembling Silicone Sleeve

Flip the Silicone Sleeve up over the rim of the bottle (3). Pull back on the sleeve, as shown, to remove any air trapped under the base of the sleeve (4).



Cleaning

To ensure optimal hygiene, always wash and rinse thoroughly before and after each use. Disassemble completely before cleaning. Clean using mild soap and water. Do **NOT** use bleach or any other harsh chemicals. The Feeding Nipple is **NOT** dishwasher safe - All other parts can be washed in the dishwasher - top rack **ONLY**.

Dry thoroughly before storing. Store in a dry place. Regularly sterilize in boiling water for 5 minutes - Allow to cool completely and dry thoroughly.

SAVE THESE INSTRUCTIONS

If you have any questions or comments about this product, or are missing any of the parts, please contact us in one of the following ways:



(877)-424-4226



info@chiccousa.com



www.chiccousa.com



1826 William Penn Way
Lancaster, PA 17601



NaturalFit®

www.chiccousa.com

150084-4E ©2016 Artsana USA, INC. 05/2016