



TODDLER TRAINING TOILET

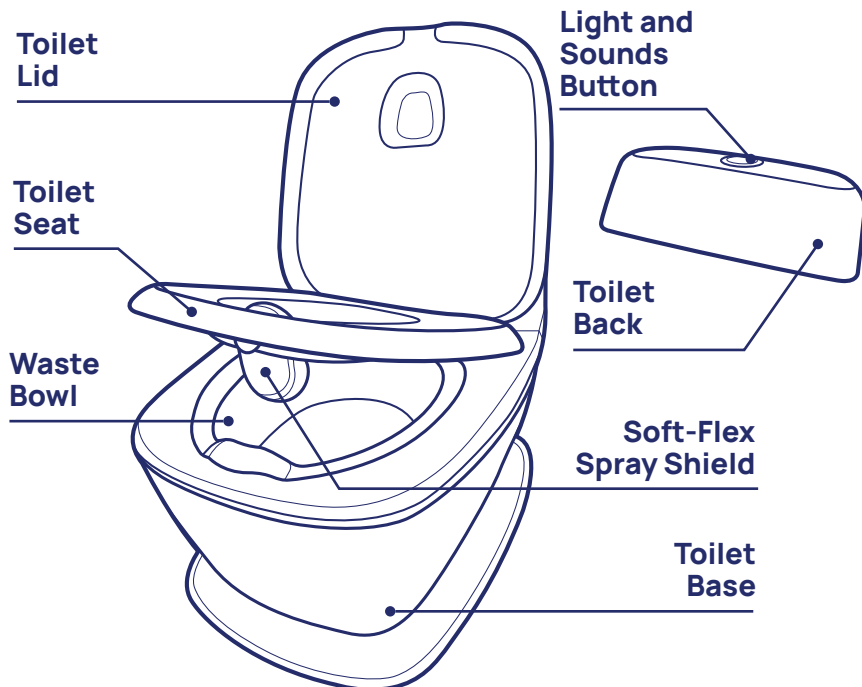
KEEP THESE INSTRUCTIONS FOR FUTURE USE

⚠️ WARNINGS

READ ALL INSTRUCTIONS BEFORE USE - Failure to follow these warnings and instructions could result in injury or death to your child. Keep these instructions for future use.

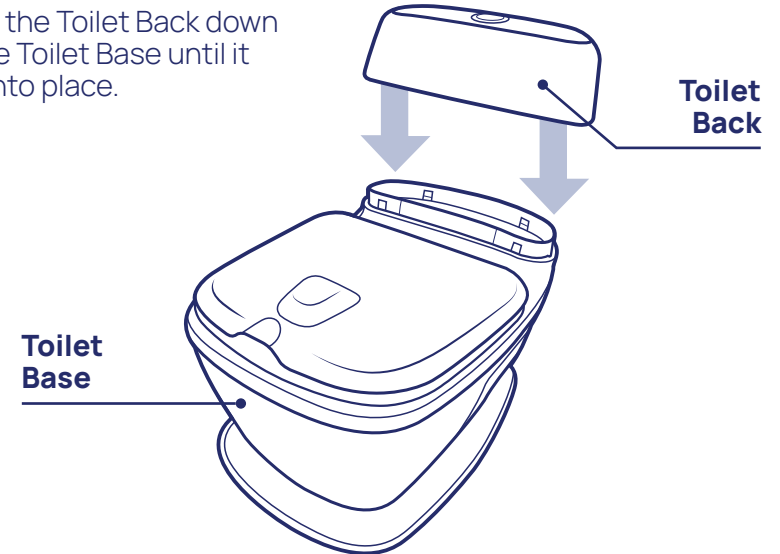
- Maximum weight for training toilet is 60 lb (27.2 kg).
- **NEVER** leave child unattended.
- **THIS IS NOT A TOY. DO NOT** use training toilet for anything other than the intended use.
- **ALWAYS** use training toilet on a dry, flat and level surface.
- To prevent damage to the electronics, **DO NOT** submerge the training toilet in water.
- Batteries must only be fitted by an adult. **ALWAYS** keep batteries and tools out of reach of children.
- **ALWAYS** remove exhausted batteries from the product to avoid damage by possible battery leakage.
- **ALWAYS** remove batteries when the product is not going to be used for long periods of time.
- It is recommended to use alkaline batteries of the same type.
- **DO NOT** mix alkaline, standard (carbon-zinc), or rechargeable (ni-cad) batteries. **DO NOT** mix old and new batteries.
- **ALWAYS** dispose of batteries properly.

PARTS



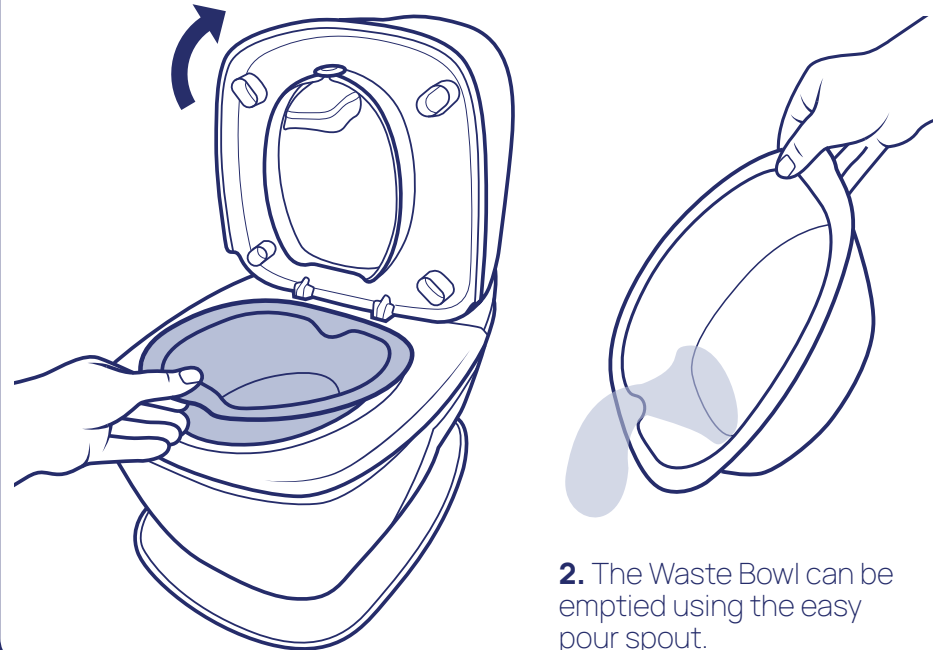
ASSEMBLY

1. Press the Toilet Back down onto the Toilet Base until it snaps into place.



WASTE BOWL

1. Lift up on the Toilet Lid and Seat. Then pull up on the handle on the front of the Waste Bowl and remove it from the Toilet Base.

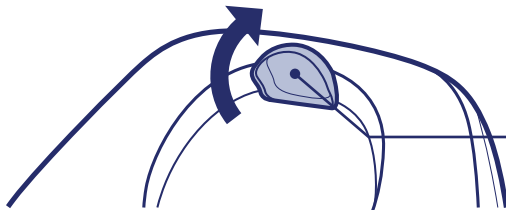
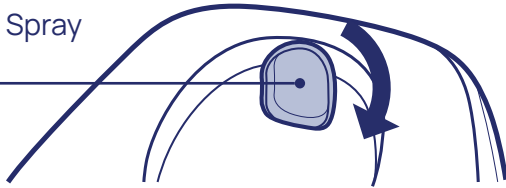


2. The Waste Bowl can be emptied using the easy pour spout.

SOFT FLEX SHIELD

Soft-Flex Spray
Shield

DOWN
for Girls

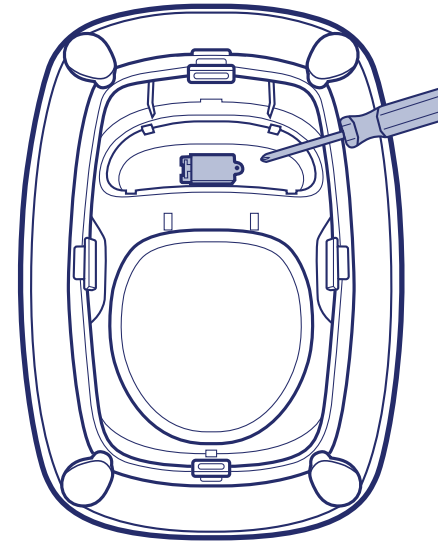


Soft-Flex Spray
Shield

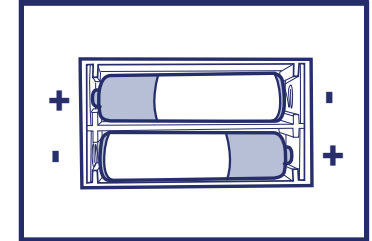
UP for Boys

1. The Soft-Flex Spray Shield can be rotated **UP** for boys and **DOWN** for girls. Rotate the Spray Shield sideways for easy removal and cleaning.

BATTERY REPLACEMENT

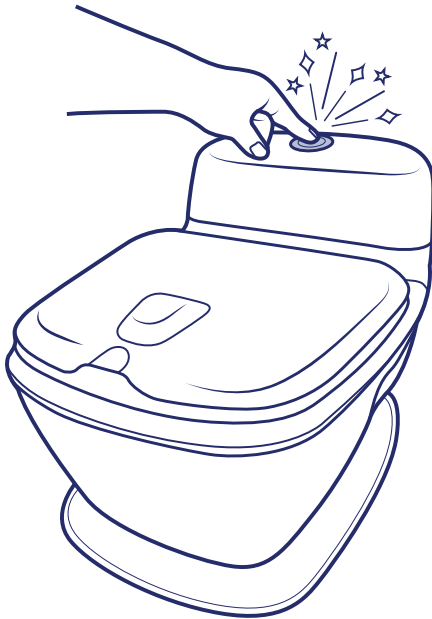


1. Turn the Toilet over and remove the battery cover using a Phillips Head screwdriver.



2. Install 2 "AA" batteries (not included) matching the polarity indicated inside battery compartment. Re-attach the battery cover.

FEATURES



1. Press the button on the Toilet Back for lights and realistic toilet flushing sounds.



2. The handle on the back of the Toilet Base can be used to easily carry the Training Toilet.

CLEANING

Wash with a neutral detergent after use. Don't use abrasive products or particularly aggressive detergents. Keep away from direct sources of heat. Do not submerge in water.

If product is broken or damaged stop use and contact Chicco Customer Service at 1-877-424-4226.

[**Kee-Ko**] If you say it right it makes you *smile*

